

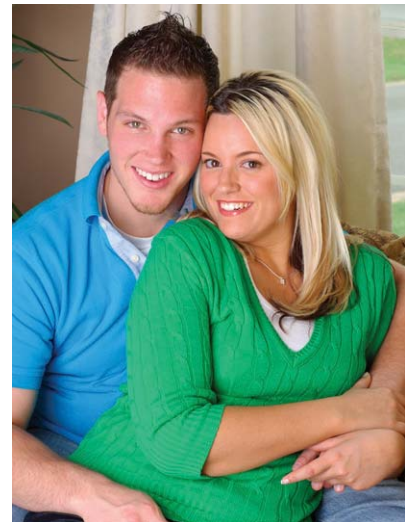
Secure 12x3

- **Perfect solution for**

- Self-employed
- Part-time and temporary employees
- Early retirees
- Those needing a COBRA alternative

- **Convenient features**

- Options for up to three 12 month coverage periods
- Rx Pay Card included
- Freedom to chose any hospital with option to use PHCS PPO network for greater savings
- \$25 per doctor office visit



Insured by: Standard Security Life Insurance Company of New York
Rated A- (Excellent) by A.M. Best Company
Administered by: Health Plan Administrators, Inc. (HPA)
Marketed by:

What is Secure 12x3?

Anytime you are without insurance, you are running a risk. You may not have a health problem now, but insurance is for the unexpected. Secure 12x3 allows you and your family to purchase affordable short-term medical coverage for physician services, surgery, outpatient and inpatient care for a temporary period.

How does the plan work?

Secure 12x3 pays benefits for each covered person in the following manner (subject to specific benefit limits):

1. You are responsible for eligible expenses until the deductible is satisfied. Choose from four options: \$500, \$1,000, \$2,500 or \$5,000 (maximum of 3 deductibles per family)
2. For most covered services, Secure 12x3 then pays 80% or 50% of the next \$10,000 of covered expenses
3. After this, Secure 12x3 pays 100% of covered expenses up to your Coverage Period maximum of \$750,000*

**Certain conditions have limited maximum benefits; see "What medical expenses are covered?" and "What Services are not covered?" Refer to your coverage document for specific terms and conditions.*

Who qualifies for Secure 12x3?

Secure 12x3 is offered to members and their spouses under age 65 and their dependent children under age 19 (or under age 25 if a full-time student) who can answer "No" to the health questions on the application. Children age 19 and over should apply separately. Child-only coverage is available for ages 2 through 18 (see the Secure 12x3 Rate Calculation instructions for details).

When does my coverage start?

Your coverage will begin as early as the day following the U.S. postmark stamp on your envelope or on the day following an application received via the Internet. You can request a later effective date, but no more than 60 days after the application date. All coverage is subject to approval of your application and payment of the first premium.

What medical expenses are covered?

After satisfying the deductible amount you've selected, Secure 12x3 will pay the coinsurance you've selected for covered expenses, up to a maximum of \$750,000 per Insured person per Coverage Period.* The Benefits are limited to the usual, reasonable and customary charge for a covered expense in addition to any specific limits.

Doctors Office Visit: up to \$25 per visit up to four visits per coverage period. After the office visit, the balance of the charge is subject to the plan deductible and coinsurance up to \$1,000 per Coverage Period.

In-Hospital regular care charges: up to \$1,000 per day; includes daily room and board and all miscellaneous charges**

In-Hospital Intensive or Critical Care charges: three times the average semi-private room rate up to \$1,250 per day; includes daily room and board and all miscellaneous charges**

Outpatient Hospital Surgery & Ambulatory Surgical Center charges: up to \$1,000 per day includes cost of operating room and all miscellaneous charges**

Out-Patient Emergency Room: up to \$500 per day includes the emergency room physician charge, 24 hour surveillance and all miscellaneous charges**

In-Hospital Doctors visits: up to \$500 maximum per hospital stay
Surgeon and Anesthesiologist: up to \$2,500 per procedure, up to \$5,000 maximum per Coverage Period

Out-Patient or Doctors Office miscellaneous charges:** up to \$1,000 per Coverage Period

Ambulance Services: up to \$250 per trip

Organ Transplants: up to \$150,000 lifetime maximum

Acquired Immune Deficiency Syndrome (AIDS): up to \$10,000 lifetime maximum***

Mammography, are covered subject to deductibles coinsurance and any specific limits

Pap Smear and Screens (includes PSA) are covered subject to deductibles, coinsurance and any specific limits

**Benefits for gall bladder surgery are limited to a \$2,500 per Coverage Period per insured person. Benefits for injury or disorders of the knees are limited to a \$2,500 per Coverage Period per insured person. Benefits may vary by state.*

***Miscellaneous charges where indicated includes: X-rays, scans, laboratory, blood, therapy, oxygen, casts, splints, medicines, injections, chemotherapy and medical supplies.*

****The AIDS maximum of \$10,000 per Coverage Period does not apply to Certificates of Insurance issued to residents of Arizona, District of Columbia or Missouri.*

Are pre-existing conditions covered?

Pre-existing conditions are not covered. The pre-existing conditions limitation includes conditions that were treated or produced symptoms within five years prior to the effective date of your Secure 12x3 Coverage Period. However, any condition covered under a prior Secure 12x3 coverage period will be covered under subsequent consecutive Secure 12x3 coverage periods, whether or not it is a pre-existing condition.

Do I need pre-certification?

You must notify the pre-certification service 10 days prior to a non-emergency hospital admission and 48 hours (or as soon as reasonably possible) following an emergency admission to the hospital for pre-certification of admission. Failure to pre-certify will result in a benefit reduction of 50%. Pre-certification is not a guarantee of benefits.

What is a usual, reasonable and customary charge?

Usual, Reasonable and Customary means with respect to fees or charges, fees for medical services or supplies which are usually charged by the provider for the service or supply given and the average charge for the service or supply in the locality in which the service or supply is received; whichever is less, or with respect to treatment or medical services, treatment which is reasonable in relationship to the service or supply given and the severity of the condition. In reaching a determination as to what amount should be considered as Usual, Reasonable and Customary for services and supplies; we may use and subscribe to a standard industry reference source that collects data and makes it available to its member companies.

Does Secure 12x3 have a Preferred Provider Organizations (PPO) Network?

In addition to your insurance plan, you'll also enjoy discounts provided through nationwide access to one of the premier PPOs through Private HealthCare Systems (PHCS). PHCS provides you with the opportunity to reduce your expenses for provider and facility services. The program is voluntary, so there is no penalty for not using a PHCS participating provider; but you can reduce your out-of-pocket medical expenses by using the program. Simply call PHCS at 1-800-678-7427 or visit PHCS on the web at www.phcs.com to verify that your doctor or hospital is part of the PHCS Healthy Directions Network. At the time of service present your Short Term Medical Insurance Identification Card with the PHCS logo on it and your provider will bill you at the reduced network rate for services if applicable.*

What is LabOne Select?

In addition to your insurance plan, you'll be able to take advantage of low-cost laboratory testing by having lab tests performed by LabOne. Using LabOne Select can save you up to 40% over other providers!*

**PHCS and LabOne are not affiliated with the Standard Security Life Insurance Company of New York nor are they a part of the Secure 12x3 insurance plan.*

How does the Rx Drug Card work?

In addition to your insurance plan, you'll also enjoy access to discounts on prescription drugs through our Rx Drug Card in over 42,000 pharmacies nationwide.* The Rx Drug Card is not an insurance benefit and therefore there is no deductible, no claim forms and no pre-existing conditions.* The Rx Drug Card is intended to help you find low cost medications within the same therapeutic class as a drug you may currently be taking. With this formulary program you pay **up to \$10** for Generic Drugs, **or up to \$20 or \$50** for Brand Name and Select Generic Drugs or a special discount on the retail cost of Brand Name Drugs.

**The Rx Drug Card is not an insurance benefit. It is not affiliated with the Standard Security Life Insurance Company of New York nor is it a part of the Secure 12x3 insurance plan.*

What is the Enhancement Series?

Included with your coverage is Communicating for America (CA) Healthy Lifestyle Enhancement Series* which provides members with discounts for the following services and/or purchases:

- Vitamins, herbs and nutritional supplements—25% off already low prices
- Nurse-on-call access to a registered nurse 24 hours a day, seven days a week
- Chiropractic services—10%-30% off at more than 30,000 private chiropractors and alternative health services
- Prescription drugs—up to 15%-60% off on generic drugs and 15%-25% off on brand-name prescriptions at more than 45,000 pharmacies nationwide
- Vision eyewear care—15%-45% off exams, eyeglasses and contact lenses through a network of more than 40,000 providers nationwide, including Pearle Vision®, Target Optical®, Sears Optical® and LensCrafters®
- Dental services—20%-50% on dental expenses from over 54,000 providers nationwide in the CAREINGTON International dental network.

**The Communicating for America (CA) Healthy Lifestyle Enhancement Series is not an insurance benefit, nor is it affiliated with Standard Security Life Insurance Company of New York or a part of the insurance plan. CA provides access to discount services administered by CAREINGTON International. Enhancement series benefits may vary by state.*

What is the optional Supplemental Accident Benefit?

If purchased, the Supplemental Accident Benefit covers \$500 of covered expenses* caused by an accidental injury. The first treatment must be within 72 hours of the accident and only expenses within 90 days after the accident are covered.

**After \$500, the balance of the expenses is subject to the plan deductible and coinsurance.*

How long will Secure 12x3 coverage last?

HPA's Secure 12x3 insurance is specifically designed to fill temporary health insurance needs. You can apply for three separate consecutive 12 month coverage periods, up to a maximum of 36 months in all.

What are my payment options?

Monthly payments are accepted by check, money order, credit card or automatic bank withdrawal. If you select the monthly pay option and your need for insurance ends before your Coverage Period ends, you can stop your coverage by notifying us in writing.

How can I have additional coverage after the 12 month Coverage Period is complete?

When your Coverage Period is almost over, you will receive a simplified application form to apply for another 12 month Coverage Period.* If you re-apply within 30 days prior to the termination date of your coverage, and your application is approved in underwriting, a new Coverage Period will be issued and the effective date will be the first day following the termination date of your Coverage Period. We will issue you a new Certificate of Insurance and new deductible and coinsurance will apply. However, the pre-existing conditions limitation will not apply to any condition(s) that were covered during a prior Coverage Period. Any other pre-existing conditions will remain subject to the pre-existing conditions limitation as described in the Certificate of Insurance.

**The coverage and rates may be different and are subject to state availability. You must be under age 65 years old to reapply for coverage.*

When does coverage terminate?

Coverage ends when the premium is not paid when due; or you cease to be a member of the association; or the group master policy terminates; or you enter full-time active duty in the Armed Forces; or you become eligible for Medicare; or the elected Coverage Period expires; or Standard Security Life Insurance Company of New York determines fraud or misrepresentation has been made in filing a claim for benefits; or a dependent ceases to be eligible.

Is there an extension of benefits after the plan terminates?

If a member, or insured dependent is receiving benefits for a hospital confinement on the date that the Certificate of Insurance terminates (for other than non payment of premium), benefits will continue in accordance with the terms of the Certificate of Insurance for as long as that confinement remains. However, in no event will coverage continue beyond the end of 90 days following the date the coverage terminates when the Insured becomes eligible for other coverage for the same conditions or the maximum benefits have been reached. Benefits payable are subject to a new Deductible Amount and satisfaction of Coinsurance Limit.

What services are not covered?

The following is a partial list of services or charges not covered by Secure 12x3:

- Any services that are not medically necessary
- Eye exams, eyeglasses, hearing aids and surgery
- Dental or orthodontic services
- Treatment of foot conditions
- Conditions resulting from an act of war
- Maternity and newborn treatment prior to discharge, any infertility treatments or sterilization treatments
- Spinal manipulation or adjustment
- Services performed by family members or for which a charge would otherwise not be incurred
- Medical care received outside of the United States, Canada or its possessions
- Services payable by Medicare or Worker's Compensation coverage
- Cosmetic surgery, treatment for acne, hair loss or varicose veins
- Transplant services to the transplant donor
- Routine physical exams and tests, preventive care and immunizations
- Experimental or investigational services
- Learning disorders, attention deficit disorder, hyperactivity or autism
- Mental or nervous disorders, depression or suicide attempt
- Alcohol or drug dependency and disorders
- Obesity treatments
- Sleep disorders
- Over-the-counter medications and prescription drugs
- Participation in school or organized competitive sports or any high risk sport
- Certain surgeries during the first six months

The limitations and exclusions may vary by state. Please see the Certificate of Insurance for detailed information about these and other plan limitations and exclusions.

Who is the Insurance Company?

Standard Security Life Insurance Company of New York has a Best's rating of A- (Excellent), effective as of 11/07. For the latest rating, access www.ambest.com.

Who is the Administrator?

Health Plan Administrators, Inc. (HPA) is a fully licensed, full service Third Party Administrator servicing businesses worldwide. HPA provides state-of-the-art industry leading insurance services.

1-800-277-3323

www.hpainsurance.com

This brochure provides a brief description of the benefits, exclusions and other provisions of the group Master Policy Form SSL-STMP-1104. For complete listing, see the Certificate of Insurance. Benefits may vary by state. Secure 12x3 is not available in all states.